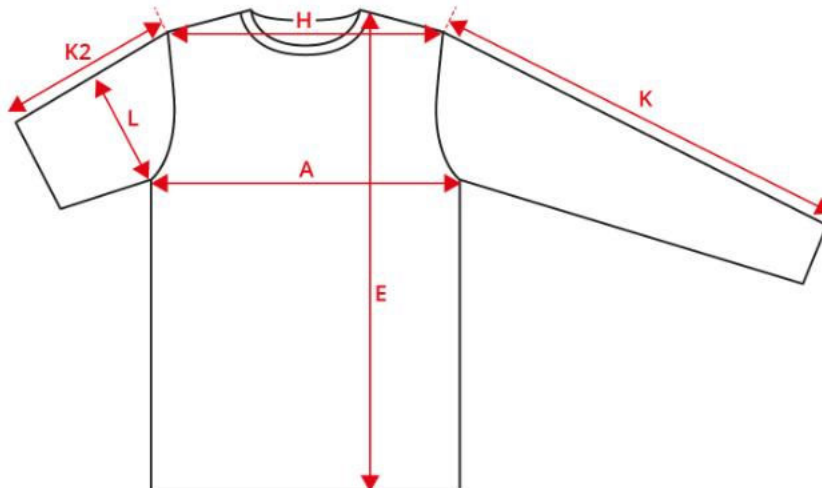


NO. 0525 Polo shirt | stretch



Description (measured in cm)	XS	S	M	L	XL	2XL	3XL	4XL	5XL	6XL
A: ½ Chest width	49	52	55	57	59	61	64	67	70	73
E: Front length from high point shoulder	67.5	69.5	71.5	73.5	75.5	77.5	79.5	81.5	83.5	85.5
H: Shoulder to shoulder	41	44	46	48	51	54	58	61	64	67
K2: Sleeve length - short	18	19	20	21	22	23	24	25	26	27
L: ½ upper arm width	18	19	20	21	22	23	24	25	26	27

How to measure



Tolerance in cm

A	E	H	K	K2	L
1.5	1.5	1.5	1.5	1	1

The measurements in a product measurement chart refer to measurements made directly on the clothing.

Lay the garment out flat on an even surface without stretching it. Take the measurements as shown by the arrows and select the size that fits.

Use a tape measure for the best results. The tolerances in the measurement chart are based on when the item is received from ID® and not after washing. We reserve the right to make mistakes and omissions in the chart. You are always welcome to contact us for further guidance on using our product measurement chart at support@id.dk or tel: +45 97492144